

Measuring Devices

JOINT STRENGTH TESTING DEVICE TYPE APE 1	2
MILLIVOLT DROP TESTING DEVICE TYPE WM 57/10A	3
CHAMFER MEASURING DEVICE TYPE FM1	5
CHAMFER MEASURING DEVICE TYPE FM2	6



Application:

For testing the strength of tamped joint between copper cable and carbon brush.

Design:

Bench model equipped with a quick action cable clamping unit.
Indication by digital display.

technical data	
testing range =	5-500 N / 10-1000N (1-110 lb / 2-220 lb)
cable diameter =	∅ 0,3 - 8,5 mm
accuracy =	0,2 % +/-1 digit
space requirements =	500 x 250 x 250mm
net weight =	7 kg
gross weight =	14 kg

Standard accessories:

- 1 force gauge
- 1 clamping unit
- 1 pulling unit
- 1 power adapter
- 1 documentation

Special accessories

- digital force gauge with other range
- digital force gauge with data transfer - RS-232C, for printer or taking over the measured values in MS-EXCEL

Millivolt Drop Testing Device Type WM 57/10A

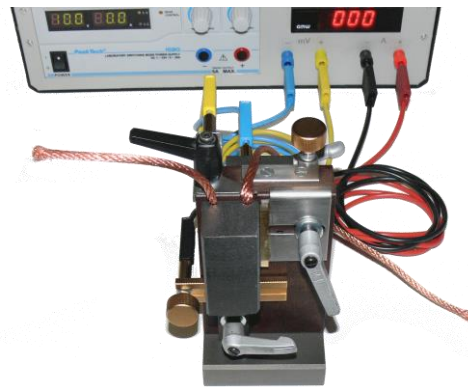
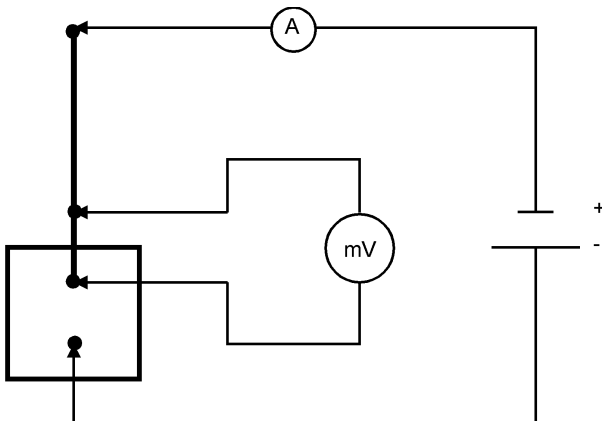


Design:

Bench type, simple design, easy and quick testing of the millivolt drop possible.

Application: For checking the millivolt drop on ramming contacts.

Range of use: For all types of carbon brushes.
Stepless variable between 1 and 10 amperes.
Special designs also available for 30, 50 and 60 A.



technical data	
voltage =	220-240 Volt 50/60Hz
output current =	max. 10 Amps
milli Volt-drop =	max. 30 Volt
resistant at 1 A =	max. 2,0 Ohm
resistant at 10 A =	max. 0,2 Ohm
accuracy =	0,2 % +/-1 digit
space requirements =	370 x 320 x140

Standard accessories:

- 1 digital voltmeter
- 1 digital amperemeter
- 1 coarse / fine set up of current
- 1 coarse / fine set up of volt
- 2 measuring pins
- 2 alligator clamping units
- 1 set of cable
- 1 documentation

Special accessories:

Fixtures for fast and repeatable measurement's:



57D01130:
measuring device brush body to cable
adjustable / for small brushes



57D01100:
measuring device brush body to cable
adjustable / for standard brushes



57C01200:
measuring device for brush body quality
for a particular carbon brush



57B01300:
measuring device material quality
for carbon plates

Chamfer measuring device Type FM1



Application :

Bench model for Quality inspection or direct near by the manufacturing machine, with included calibration gauge.

For quick and error free measuring the edge chamfer of carbon brushes or other work pieces.

technical data	
chamfer =	0- 2,4mm x 45°
workpiece size =	min. 2 x 2 x 5mm
space requirements =	120 x 120 x 150mm
power supply =	Battery
net weight =	2 Kg

Chamfer measuring device Type FM2



Application :

Mobile model for Quality inspection or direct near by the manufacturing machine, with separate calibration gauge.

For quick and error free measuring the edge chamfer of carbon brushes or other work pieces.

technical data	
chamfer =	0- 2,4mm x 45°
workpiece size =	min. 2 x 2 x 5mm
space requirements =	60x 100 x 30mm
power supply =	Battery
net weight =	0,35 Kg